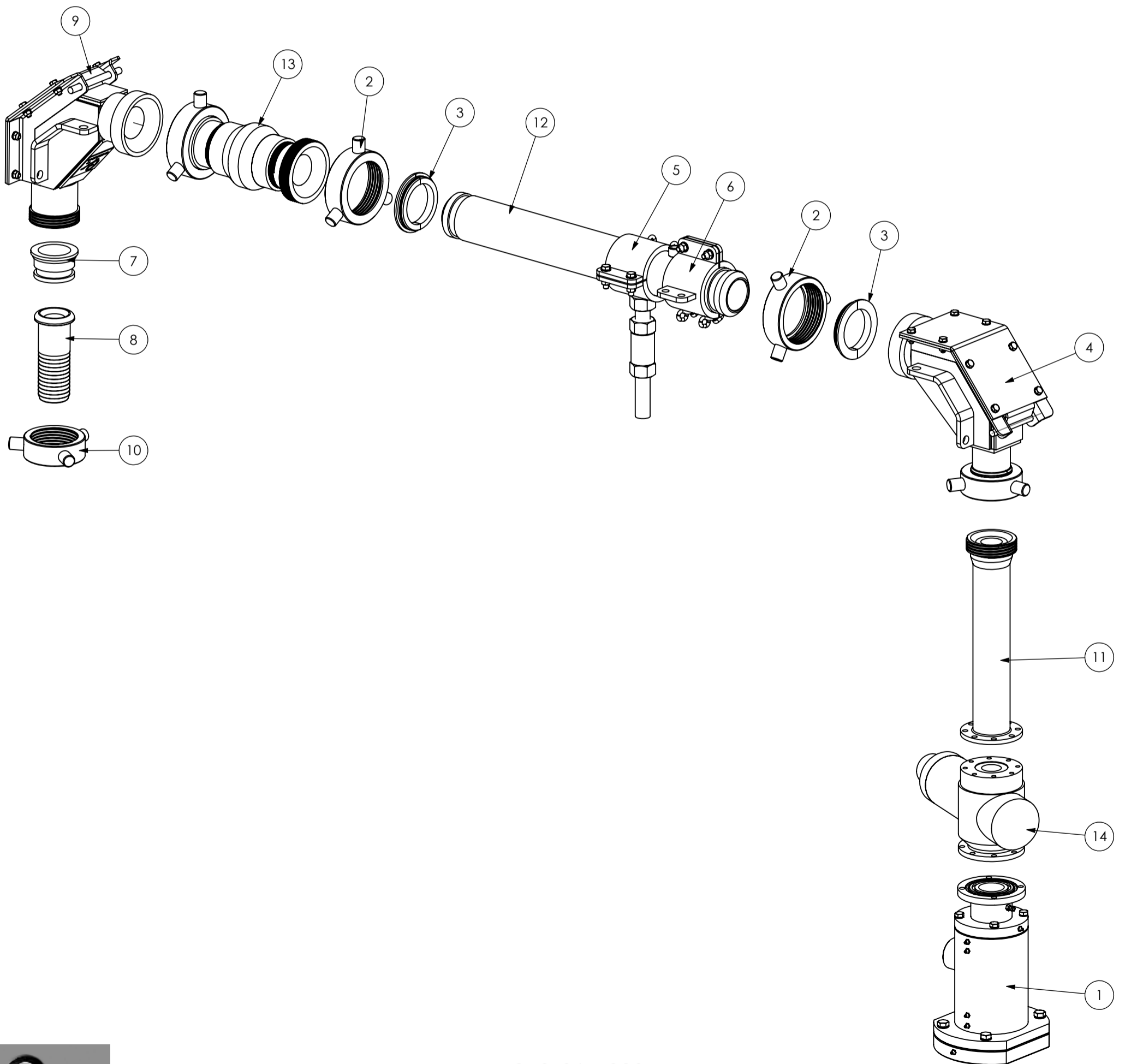


ITEM NO.	Part Number	Description	QTY.
1	100-002-000	Swivel, Air Drill Head, Harlsan MKII Blowdown Assembly	1
2	250-001-002	Knock on Hammer Union Nut 4"	2
3	250-001-004	Split Collar for 4" Knock On Nut	2
4	250-001-009	Wear Bend, 90deg, 3" Inlet to 4" Outlet	1
5	250-001-025	4" Horizontal Pipe Anchor Clamp	1
6	250-001-028	4" Horizontal Sample Pipe Safety Chain Restraint Clamp	1
7	250-001-044	3" Hose Tail Collar	1
8	250-001-045	Hose Tail Inner, Hardened, 3"	1
9	250-001-052	Wear Bend, 90deg, 4" Inlet to 3" Outlet	1
10	250-004-003	3" Figure 200 Hammer Union Nut	1
11	250-015-005	Adaptor (Long), Harlsan Blowdown to 3" Coarse Nipple	1
12	250-015-006	Sample Pipe Assembly, Horizontal 4" suit Split Collars, 900mm Long	1
13	250-015-009	Swivel, Swivel Pipe, Adaptor & Nut	1
14	OX66-0012	Blowdown - Harlsan	1



250-015-000

Sample Diversion System, A Model Swivel to suit Harlsan Blowdown, 4" Cross Pipe with Swivel

